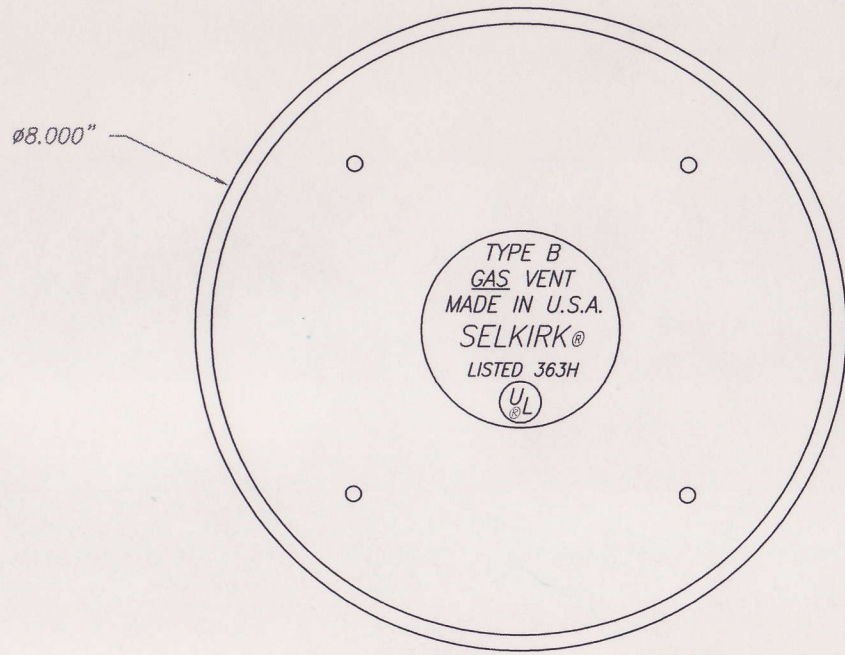


FRONT VIEW



SIDE VIEW

REFERENCE  
 SELKIRK METAL BESTOS  
 ② MODEL 4RV-RT TYPE B  
 GAS VENT

②

4RV-RT 4" METAL BESTOS TYPE B VENT CAP

**Solaronics**

The Leader In Gas Infra-Red Technology

TOLERANCES - UNLESS OTHERWISE SPECIFIED

.0	±.030	
DECIMAL .00	±.020	ANGLES ±1°
.000	±.010	

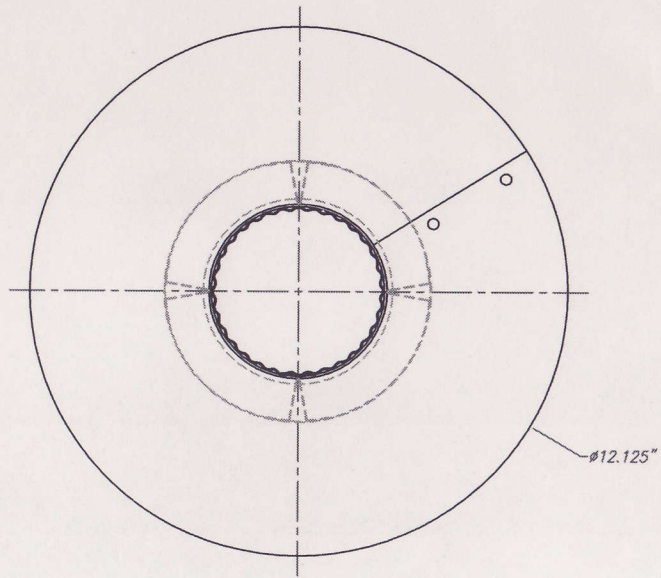
ALL DIA'S ON SAME CENTERLINE MUST BE CONCENTRIC WITHIN .005" T.I.R.  
 DEBURR PER SBS 396 DO NOT SCALE THIS PRINT  
 THIS DRAWING IS THE PROPERTY OF SOLARONICS, INC. AND SHALL NOT BE USED  
 OTHER THAN FOR INFORMATION WITHOUT WRITTEN PERMISSION FROM SOLARONICS, INC.

2	1940	7-17-08	LB
1	841	2-6-96	LB
REV.	ECO	DATE	

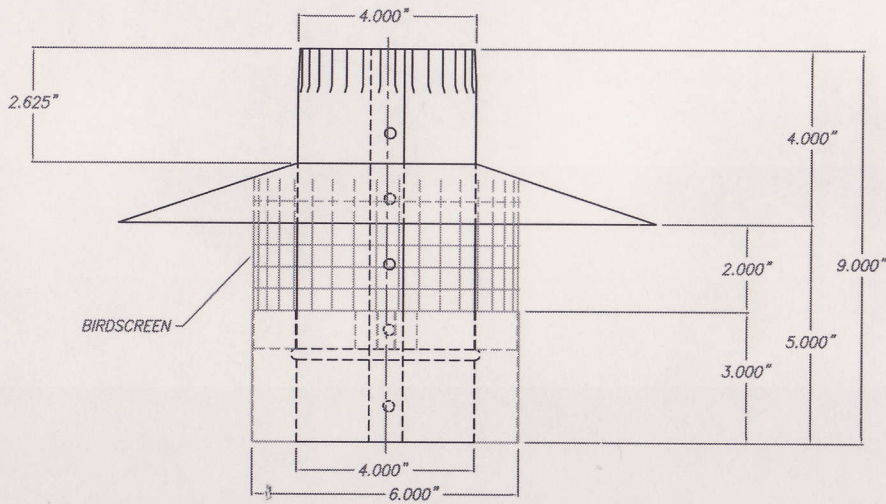
SCALE	NONE	DATE	10-14-83
DRAWN	LB	APPROVED	

DRAWING NO.	AA-131402	REV.	2
-------------	-----------	------	---

FEB 26 2009



TOP VIEW



FRONT VIEW

MATERIAL- 28 GA. GALV.  
DUAL VENT CAP FOR SUNTUBE

**Solaronics**  
The Leader In Gas Infra-Red Technology

TOLERANCES - UNLESS OTHERWISE SPECIFIED

DECIMAL FRACTIONS ANGLES AT  
 .0001 .0005 .0010 .0015 .0020 .0030 .0040 .0050 .0060 .0070 .0080 .0090 .0100 .0150 .0200 .0300 .0400 .0500 .0600 .0700 .0800 .0900 .1000 .1500 .2000 .3000 .4000 .5000 .6000 .7000 .8000 .9000 1.0000 1.5000 2.0000 3.0000 4.0000 5.0000 6.0000 8.0000 10.0000  
 ALL DIMS ON THIS DRAWING SHALL BE CONSIDERED UNLESS OTHERWISE SPECIFIED  
 DIMENSIONS FOR THIS DRAWING ARE IN INCHES UNLESS OTHERWISE SPECIFIED

DATE	DESCRIPTION	BY	CHKD
12-6-99		LB	

C-132747

FEB 26 2009